



鴻海綜合能源股份有限公司
Googol Company



Mono-crystalline Silicon Photovoltaic Module



WS370-400WG6M

Features :

- High power module using 6" mono-crystalline solar cell.
- Bypass diode minimizes power drop by shade.
- Using optical low iron tempered glass, EVA laminate and Tedlar backsheet.
- Anodize aluminum frame protected.
- Manufactured in ISO 9001 : 2000 certified facility.
- 25-years limited warranty on power output.

NO.7-1, Ln.3, Xinhe 1st Rd., Tainan City 702, Taiwan

TEL: +886-6-2637188 FAX: +886-2-66021277

www.target-solar.com

info@target-solar.com

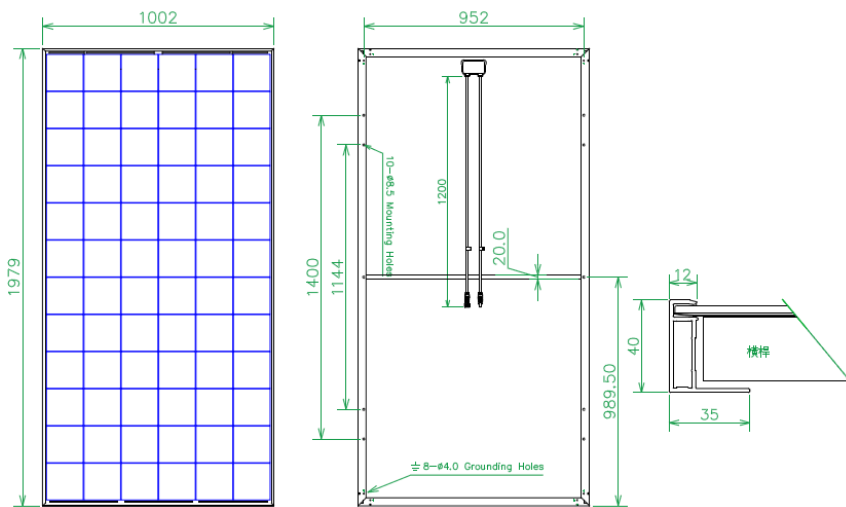
Specifications :

Power	370W	375W	380W	385W	390W	395W	400W
Model							
Max power voltage Vmp(V)	39.31	39.52	39.74	40.02	40.37	40.73	41.15
Max power current Imp(A)	9.41	9.49	9.56	9.62	9.66	9.70	9.72
Open circuit voltage Voc(V)	48.58	48.79	49.01	49.16	49.38	49.60	49.82
Short circuit current Isc(A)	9.74	9.83	9.91	10.02	10.10	10.18	10.27
Weight(KG)	23						
Number of cells	72						
Module Efficiency(%)	18.66%	18.91%	19.16%	19.42%	19.27%	19.92%	20.17%
Power Tolerance	+/-3%						

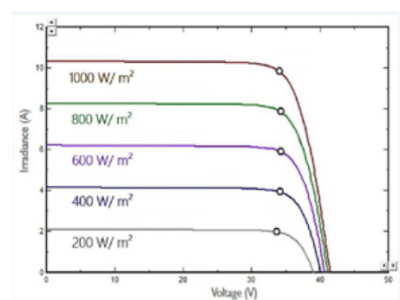
*1 STC: Irradiance level 1000 W/m²; Spectral AM1.5; Temperature 25°C
 *2 Power tolerance can be adjusted upon requests
 *3 NOCT: 46±2°C

Mechanical Characteristics

Dimensions of the Module (W×H×D)(mm) 1979X1002X40
 Junction box IP 68 or above with 3 bypass diodes ; cables 1.2M/φ 4mm²
 Series fuse rating Inside Junction Box 15A



IV Curve



Packing Configuration

Container	20'GP	40'HQ
Pieces per pallet	26	26
Pallets per container	12	28
Pieces per container	312	728

Warranty

Product Warranty:
 10 Years for Material and Workmanship
 Performance Guarantee:
 90% for 10 Years Guaranteed Output
 80% for 25 Years Guaranteed Output

Working Condition

Maximum System Voltage: 1500V
 Operating Temperature: -40 ~ +85°C
 Maximum Static Load: Snow load 5400pa
 Wind load 3600pa

Temperature Coefficient

Isc Temperature Coefficient: α(%/°C) +0.05
 Voc Temperature Coefficient: β(%/°C) -0.31
 Pmax Temperature Coefficient: γ(%/°C) -0.31

NO.7-1, Ln.3, Xinhe 1st Rd., Tainan City 702, Taiwan

TEL: +886-6-2637188 FAX: +886-2-66021277

www.target-solar.com

info@target-solar.com