



鴻海綜合能源股份有限公司  
Googol Company



**Mono-crystalline Silicon Photovoltaic Module**



**WS315-335WG6M**

### Features :

- High power module using 6" mono-crystalline solar cell.
- Bypass diode minimizes power drop by shade.
- Using optical low iron tempered glass, EVA laminate and Tedlar backsheet.
- Anodize aluminum frame protected.
- Manufactured in ISO 9001 : 2000 certified facility.
- 25-years limited warranty on power output.

NO.7-1, Ln.3, Xinhe 1st Rd., Tainan City 702, Taiwan

TEL: +886-6-2637188

FAX: +886-2-66021277

[www.target-solar.com](http://www.target-solar.com)

[info@target-solar.com](mailto:info@target-solar.com)

# Specifications :

Model \ Power	315W	320W	325W	330W	335W
Max power voltage Vmp(V)	32.93	33.28	33.57	33.99	34.34
Max power current Imp(A)	9.57	9.62	9.68	9.71	9.76
Open circuit voltage Voc(V)	40.66	40.84	41.03	41.27	41.45
Short circuit current Isc(A)	9.91	10.02	10.13	10.23	10.33
Weight(KG)	19.5				
Number of cells	60(6x10)				
Model Efficiency(%)	18.88%	19.18%	19.48%	19.78%	20.08%
Power Tolerance	+3%				

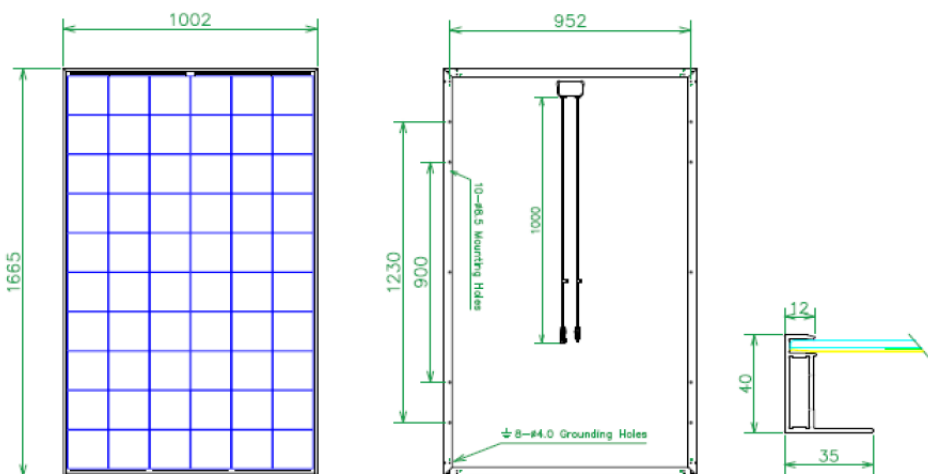
## Mechanical Characteristics

Dimensions of the Module(WxHxD)(mm) 1665x1002x40

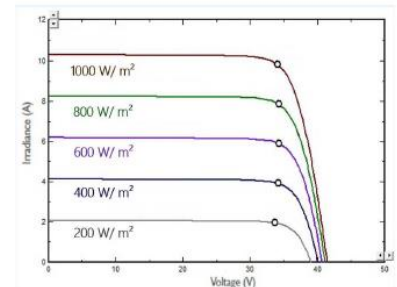
Junction box

IP68 with 3 bypass diodes ; cables 1M/Φ4mm<sup>2</sup>

Series fuse rating Inside Junction Box 15A



## IV Curve



## Packing Configuration

Container	20' GP	40' HQ
Pieces per pallet	26	26
Pallets per contain	12	28
Pieces per contain	312	728

## Warranty

### Product Warranty:

10 Years for Material and Workmanship  
Performance Guarantee  
90% for 10 Years Guaranteed Output  
80% for 25 Years Guaranteed Output

## Working Condition

Maximum System Voltage: 1500V  
Operating Temperature: -40~+85°C  
Maximum Static Load: Snow load 5400pa  
Wind load 3600pa

## Temperature Coefficient

Isc Temperature Coefficient:  $\alpha$ (%/°C) +0.06  
Voc Temperature Coefficient:  $\beta$ (%/°C) -0.33  
Pmax Temperature Coefficient:  $\gamma$ (%/°C) -0.44

NO.7-1, Ln.3, Xinhe 1st Rd., Tainan City 702, Taiwan

TEL: +886-6-2637188

FAX: +886-2-66021277

[www.target-solar.com](http://www.target-solar.com)

[info@target-solar.com](mailto:info@target-solar.com)